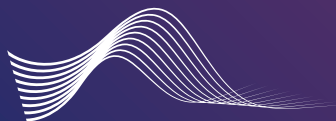


Audimute[®] AcoustiColor[®] Acoustic Panels



AUDIMUTE™
sound management solutions



**ACOUSTICOLOR
ACOUSTIC SOLUTIONS**

ACOUSTICOLOR ACOUSTIC PANELS

Functional & Decorative

Combine form and function with AcoustiColor Acoustic Panels. With a variety of shapes, sizes, and colors to mix and match, there's no limit to what you can create!

AcoustiColor Acoustic Panels were created with the idea that acoustics could make a visual impact in addition to making a room sound great. AcoustiColor Acoustic Panels are free to take form in a multitude of shapes and sizes, even tileable geometric shapes. Audimute offers a variety of modular acoustic tiles that you can create in any scale. Each modular panel acts as a part of a whole – allowing you to build your design and sound until you reach your desired results. The result: nearly seamless acoustic panels that can stand alone or nest adjacent to each other for large group installations.

Install acoustic panels in any space – from the home to the gym, office or restaurant. Audimute has the perfect acoustic panel for every space. Create bold floor to ceiling murals or intimate wall décor; coated in any color you want. With custom small and large size ordering, your design acoustics are truly fit for your space and application to match your décor and sound needs.

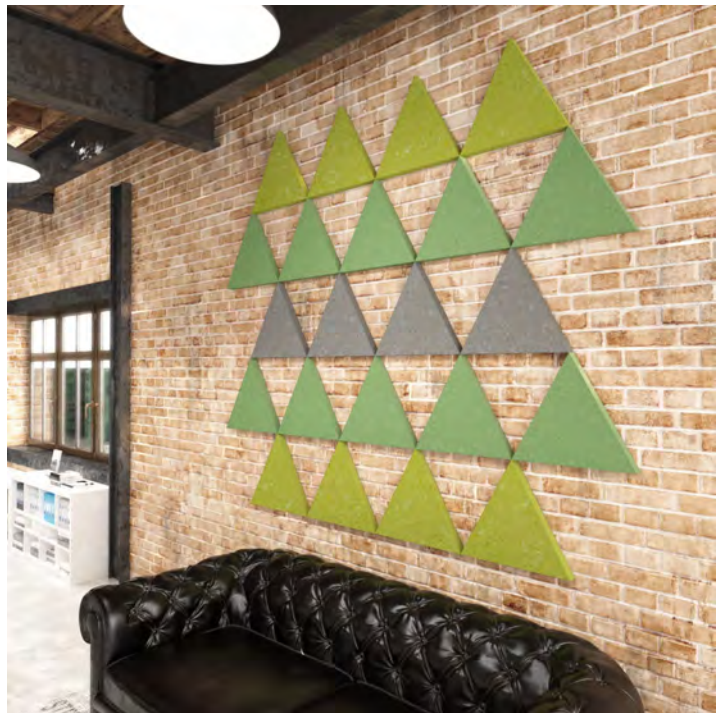


ACOUSTICOLOR ACOUSTIC SHAPES

Modular Acoustics

Audimute AcoustiColor Acoustic Shapes combine aesthetics with acoustic performance. Audimute's shapes break up hard surfaces decoupling sound waves. They are made with our eco-C-tex[®] sound absorption material, which consists of a blend of recycled cotton and cellulose fibers, the majority of which are post-consumer recycled newspaper. Acoustic Shapes are available in two pack sizes, small and large, and three thicknesses, 0.5", 1", and 1.5".

Create designer patterns with varying depths or flush designs. Shapes can be spaced apart or tightly fit together. Bring your wall art ideas to life by adding Audimute Acoustic Shapes to any space.



ACOUSTICOLOR ACOUSTIC SHAPES

ELEVATION: ACOUSTICOLOR ACOUSTIC SHAPES DIMENSIONS
 Custom shapes are available up on request.

Small Sizes

<p>Bicone</p> <p>7" 14"</p>	<p>Concave Oval</p> <p>15" 9"</p>	<p>Scallop</p> <p>11" 12"</p>	<p>Circle</p> <p>12" 12"</p>
<p>Ring</p> <p>12" 12" 6"</p>	<p>Chevron</p> <p>9" 20.625"</p>	<p>Parallelogram</p> <p>23.875" 12"</p>	<p>Right Triangle</p> <p>12" 12" 16.75"</p>
<p>Hexagon</p> <p>12" 10.375"</p>	<p>Rounded Square</p> <p>12" 12"</p>	<p>Diamond</p> <p>12" 20.625"</p>	<p>Plank</p> <p>6" 24"</p>
<p>Convex Square</p> <p>12" 12"</p>	<p>Concave Square</p> <p>12" 12"</p>	<p>Triangle</p> <p>12" 12"</p>	<p>Oval</p> <p>9" 12"</p>

ACOUSTICOLOR ACOUSTIC SHAPES

ELEVATION: ACOUSTICOLOR ACOUSTIC SHAPES DIMENSIONS
 Custom shapes are available up on request.

Large Sizes

<p>Bicone</p> <p>12" 24"</p>	<p>Concave Oval</p> <p>24" 14.5"</p>	<p>Scallop</p> <p>24" 21.75"</p>	<p>Circle</p> <p>24" 24"</p>
<p>Ring</p> <p>24" 24" 12"</p>	<p>Chevron</p> <p>12.5" 33"</p>	<p>Parallelogram</p> <p>33.75" 16"</p>	<p>Right Triangle</p> <p>16" 16" 22.5"</p>
<p>Hexagon</p> <p>24" 20.75"</p>	<p>Rounded Square</p> <p>24" 24"</p>	<p>Diamond</p> <p>19" 32.5"</p>	<p>Plank</p> <p>6" 36"</p>
<p>Convex Square</p> <p>24" 24"</p>	<p>Concave Square</p> <p>24" 24"</p>	<p>Triangle</p> <p>24" 24"</p>	<p>Oval</p> <p>18" 24"</p>

ACOUSTICOLOR TILES

Coated to match any Sherwin-Williams paint color and available in 8 size options.

Audimute's AcoustiColor Tiles improve sound quality in a room by absorbing sound that would otherwise reflect off a solid surface, such as a wall or ceiling, and create unwanted echoes and reverberation. The core of each tile is made from our 100% recycled sound absorption material, eco-C-tex.

Please Note: Only the top surface of the tiles are coated in a color of your choosing, with the sides being exposed eco-C-tex. Due to eco-C-tex consisting of recycled materials, natural variations in texture and shading can occur, especially from order to order.

- Made in the USA
- Eco-Friendly
- Easy to Install
- Durable
- Effective - 0.75 NRC
- Class A Fire-Rated (ASTM E-84)

Tile Pack Sizes (16sqft of material):

- A - (4) 24" x 24"
- B - (8) 12" x 24"
- C - (10) 9.6" x 24"
- D - (12) 12" x 16"
- E - (16) 12" x 12"
- F - (16) 6" x 24"
- G - (32) 6" x 12"
- H - (48) 4" x 12"

The tiles can be cut with a utility knife if needed for an exact fit in your space. If your application is larger than 16sqft, consider ordering multiple quantities of the same tile color or choose a mix of colors and sizes. Combine the tiles with other products such as our AcoustiWood® Planks and AcoustiStone™ Tiles for a truly unique acoustic treatment.



ACOUSTICOLOR PLANKS

Choose from our standard color options or use a custom color for the perfect sound solution that integrates well with the style in your space.

The planks are an effective and visually appealing sound absorption solution designed to improve sound quality in a room. The core of the planks is made from our 100% recycled sound absorption material, eco-C-tex®, and the surface is coated to match any Sherwin-Williams paint color.

Please Note: Only the top surface of the planks are coated in a color of your choosing, with the sides being exposed eco-C-tex. Due to eco-C-tex consisting of recycled materials, natural variations in texture and shading can occur, especially from order to order.

- Made in the USA
- Eco-Friendly
- Easy to Install
- Durable
- Effective - 0.75 NRC
- Class A Fire-Rated (ASTM E-84)



ACOUSTICOLOR: WALL ART LETTERS

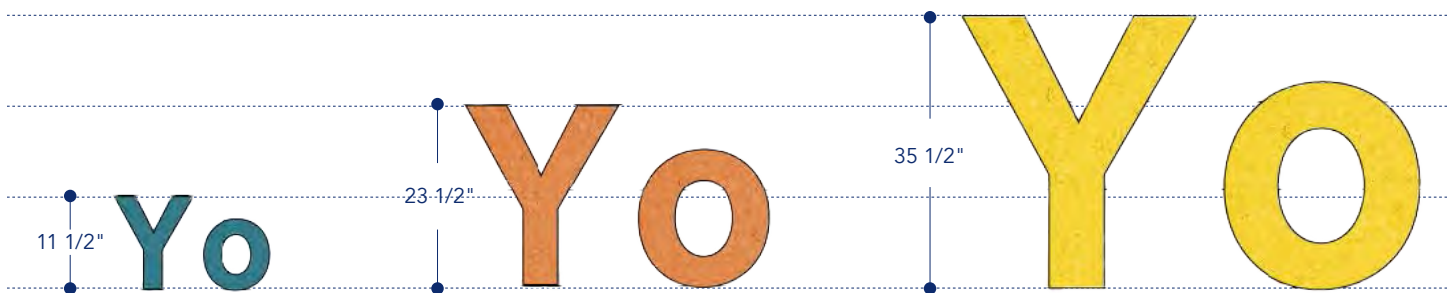
Phrases, Sayings, Names and More

Audimute's AcoustiColor Wall Art Letters are a completely customizable addition to your wall décor. Choose your letter, size, and color to create custom word wall art that blends naturally or stands out in your existing décor. We chose our fonts with these same customer needs in mind. Combining aesthetics with functionality, our custom word wall art letters look great while providing sound absorption in your space.



ELEVATION: ACOUSTICOLOR WALL ART LETTER SIZING

Font thickness per letter will always be greater than 0.5".



ACOUSTICOLOR: DESIGNER SIGNS

Branded Acoustic Treatment

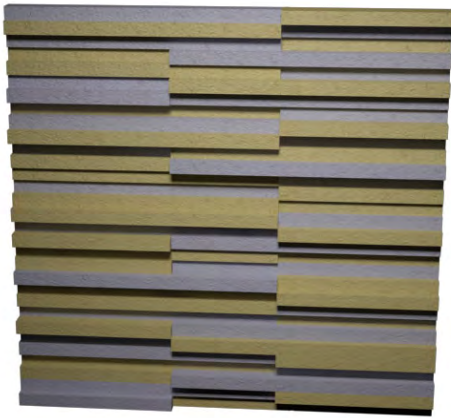
Acoustic Designer Signs are an innovative approach to branding your business. With Acoustic Designer Signs, you are in complete control and the possibilities are endless. Your custom sign will be the perfect addition to the reception area, conference room, or any room where sound absorbing and branding are needed.

Acoustic Designer Signs are made from eco-C-tex sound absorption material, a blend of recycled cotton and post-consumer newspaper. Combining aesthetics with functionality, wall signs have an NRC rating of .95, excellent for mid-to-high range frequency sound absorption. Installation is simple with our hang tabs, ideal for corporate or commercial offices, restaurants, and retail stores. Add a custom logo business sign to your office and stand out from the crowd.

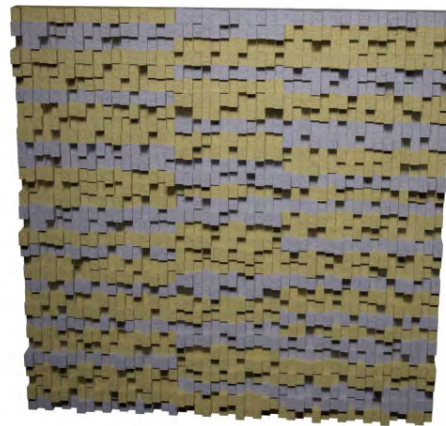


ACOUSTICOLOR: AUDIMUTE STRATA®

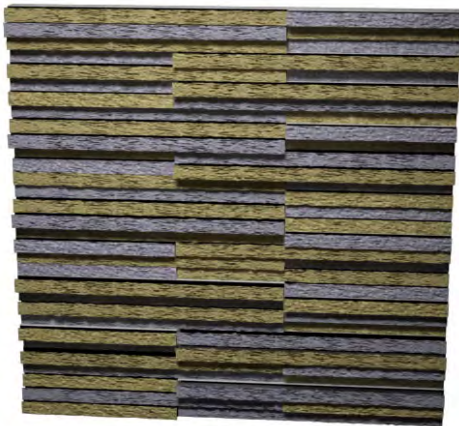
Audimute Strata is made with our eco-friendly sound absorption material eco-C-tex and can be coated in a variety of Sherwin-Williams paint options. Key characteristics are a dense yet porous fine-grained appearance. Current styles include: Flat, Textured, Cityscape, Curve, Slant, & Sawtooth. Each style option consists of 22-24 sq.ft. worth of material.



FLAT



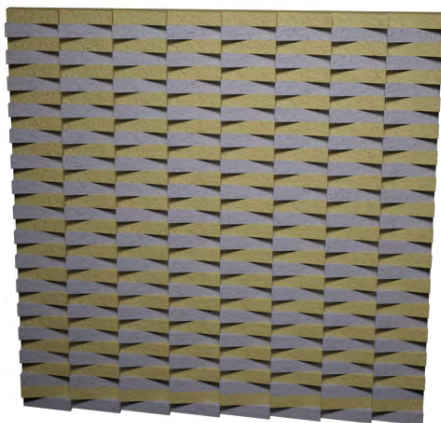
CITYSCAPE



TEXTURED



CURVE



SAWTOOTH



SLANT

AUDIMUTE STRATA: COATING OPTIONS



Shady Gray



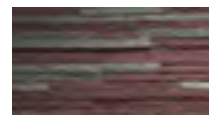
Indigo Slate



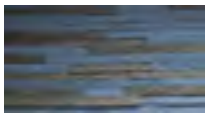
Sand Dune



Commanding Clay



Red Rocking Slate



Indigo Night



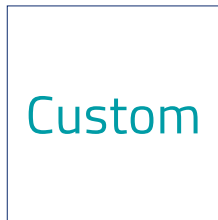
Serious Sandstone



Granite Run



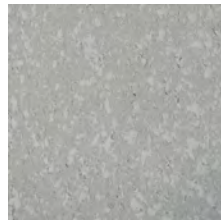
Arizona Sky



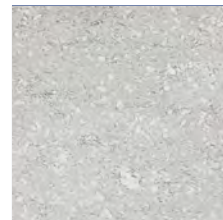
Custom Color



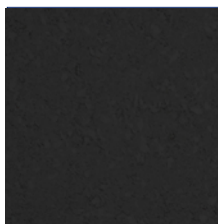
Software



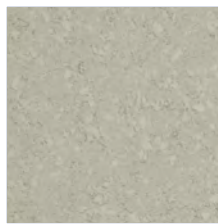
Argos



Stone White



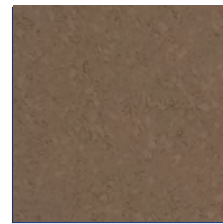
Tricorn Black



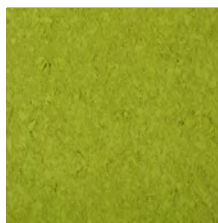
Amazing Gray



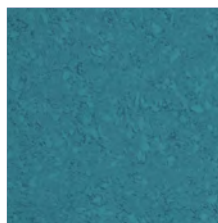
Tavern Taupe



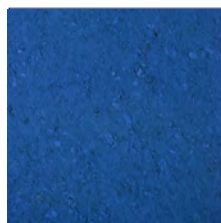
Cobble Brown



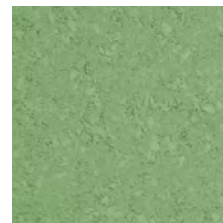
Hep Green



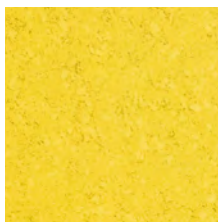
Great Falls



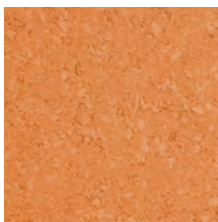
Blue Chip



Organic Green



Daisy



Tango



Redbud



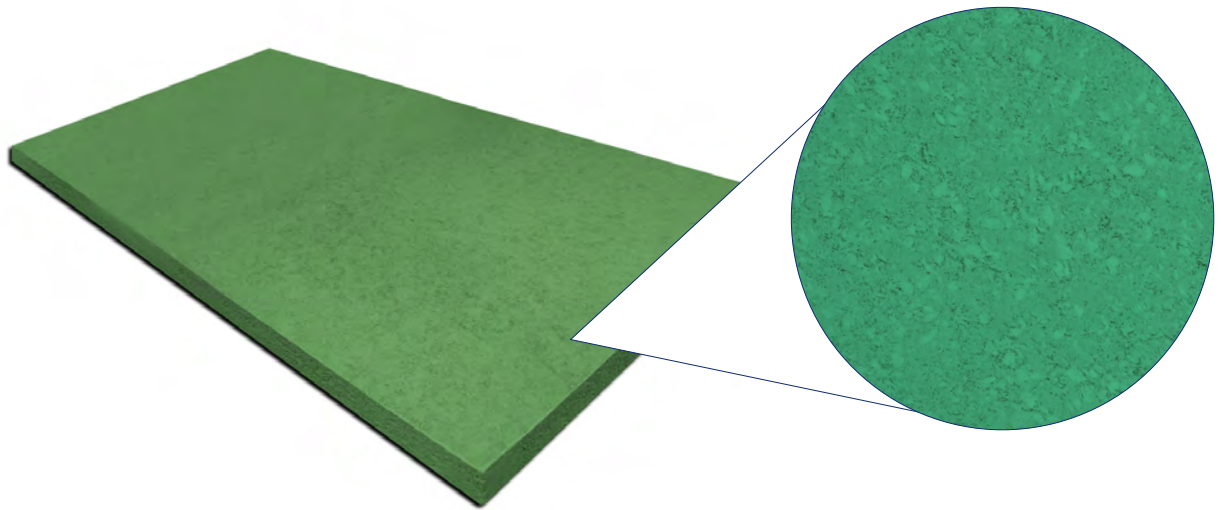
Vigorous Violet

ACOUSTICOLOR: COATING OPTIONS

The possibilities are endless.

There are 1,000's of color options to choose from Sherwin-Williams' line of acoustical coatings. We can also match colors from other commercial paint manufacturers. With AcoustiColor Acoustic Panels you have the opportunity to match the décor of any space. Our coated acoustic panels are made from recycled cotton and paper products which gives a unique textured finish.

NOTE: Color matching cannot be guaranteed across shipments from different orders and variation may be more pronounced beyond the normal commercial range.



AcousticColor Acoustic Tiles

AcoustiColor Swatch Detail

ACOUSTICOLOR: COATING OPTIONS

Add exceptional sound absorption, superior aesthetics, and design flexibility that reflects your individual personality and style with AcustiColor Acoustic Panels, Shapes, Planks, & Tiles.

AcustiColor Acoustic Panels are lightweight and create a modern appearance combined with noise reduction and reverberation control. AcustiColor Acoustic Panels are created using recycled materials, so natural variations in texture and shading can occur.



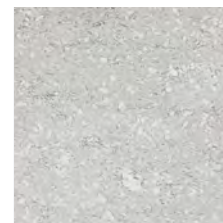
Custom Color



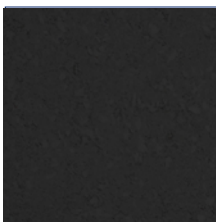
Software



Argos



Stone White



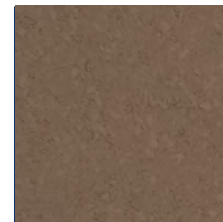
Tricorn Black



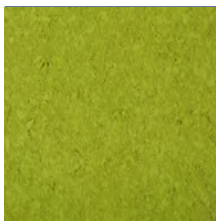
Amazing Gray



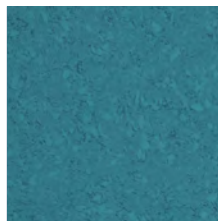
Tavern Taupe



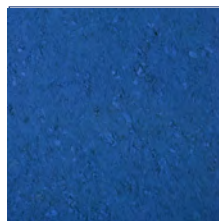
Cobble Brown



Hep Green



Great Falls



Blue Chip



Organic Green



Daisy



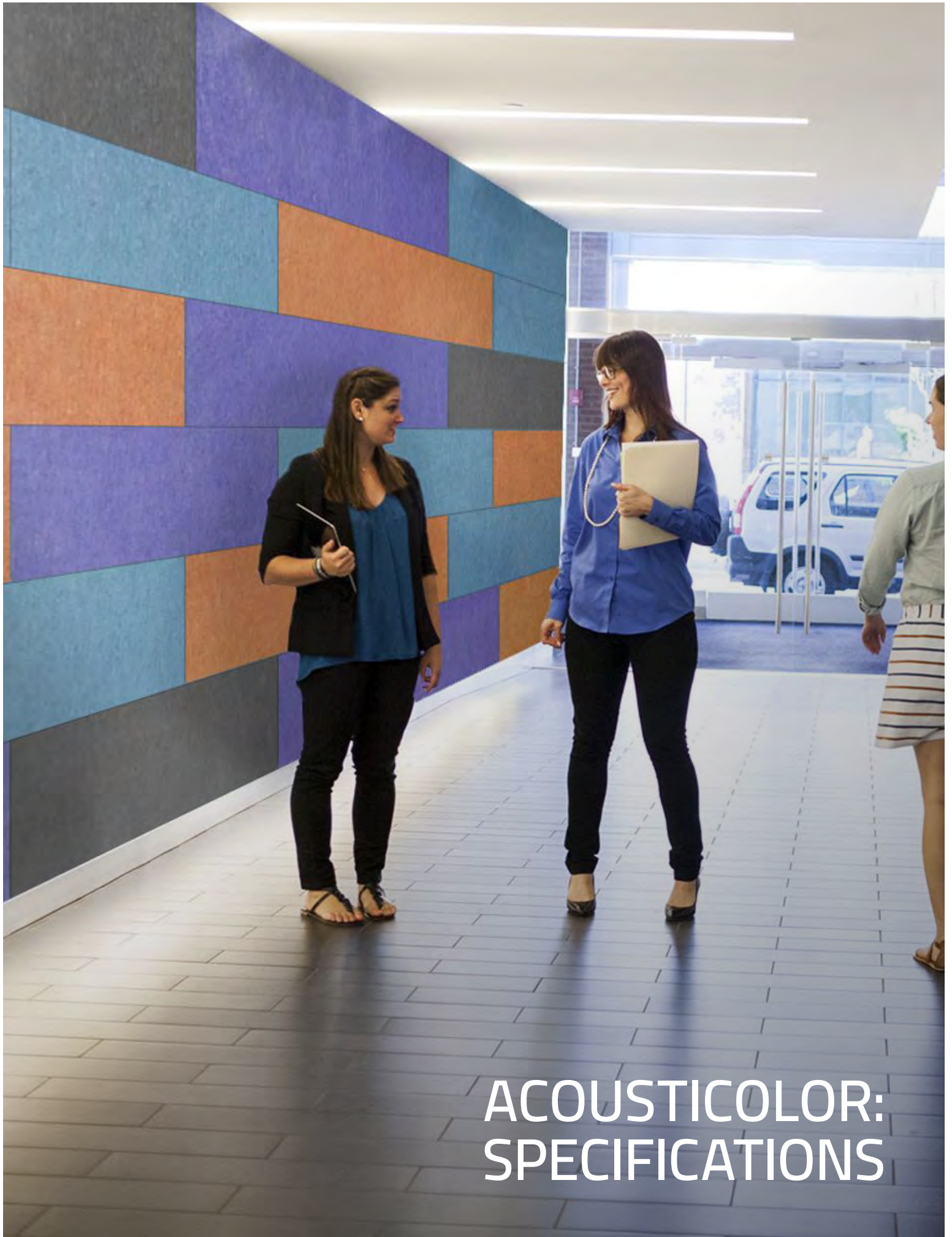
Tango



Redbud



Vigorous Violet



ACOUSTICOLOR: SPECIFICATIONS

ACOUSTICOLOR® ACOUSTIC PANELS: SPECIFICATIONS

CONTENT	Acoustic substrate: P.E.T. 10% - 30%, Recycled Cotton 70% - 90%
COMPONENTS	Acoustic Substrate, Coating
THICKNESS	Panels: 1-1/2" Shapes: 0.5", 1", & 1-1/2"
THICKNESS TOLERANCE	+1/8" for 0.5" & 1" Thicknesses and +1/4" for 1-1/2".
SIZES & WEIGHTS	1' x 1' (0.75 lb), 1' x 2' (1.5 lb), 1' x 3' (2.25 lb), 1' x 4' (3 lb), 2' x 2' (3 lb), 2' x 3' (4.5 lb), 2' x 4' (6 lb), 3' x 3' (6.75 lb), 3' x 4' (9 lb), 4' x 4' (12 lb), & Custom sizes up to 4'x 8'. Shapes: Small & Large pack sizes, approx. 0.75 - 1 lb per shape. See pages 5-6. Audimute Strata® - 22-24 sq.ft. Number of pieces, depths, & tolerances vary. See Cut Sheet.
FINISH OPTIONS	AcoustiColor Coating
EDGE STYLE	Panels: Straight Audimute Strata: Flat, Textured, Cityscape, Curve, Slant, Sawtooth
APPLICATION	Indoor Wall
CUTTING / ALTERATIONS	Table Saw w/ Metal Cutoff Blade, Jig Saw w/ T-Shank Scalloped Knife Blade, Foam Saw, Utility Knife
INSTALLATION	Panels: Adhesive Hang Tab, Construction Adhesive, Mechanical Lock Audimute Strata: Audimute Strata Tape, Construction Adhesive, Paslode® Brad Nailer & Foot
HANDLING / CARE	When handling panels, make sure hands are clean and oil free. Vacuuming or light brushing is recommended to prevent dust and soil buildup.
STORAGE	Acoustic Panels must be stored in a dry place. Delivery Packaging is not ideal for storage purposes. It is advised to place a polyethylene cover over the stack when packaging is removed, to reduce moisture absorption. It is recommended that panels be stored horizontally. It is recommended that panels should not be stacked. It is strongly recommended to avoid storage longer than 6 months. Do not allow water to come into direct contact with the material during storage. Store in a cool dry space 55°F - 85°F.
FIRE RATING	ASTM E84 Class A.
ACOUSTIC RATING	NRC: 0.95 (1.5" Thickness), 0.75 (1" Thickness), & 0.55 (0.5" Thickness)

ACOUSTICOLOR TILES: SPECIFICATIONS

CONTENT	Acoustic substrate: P.E.T. 10% - 30%, Recycled Cotton 70% - 90%
COMPONENTS	Acoustic Substrate, Coating
THICKNESS	1"
THICKNESS TOLERANCE	+1/8"
SIZES	4'x4' (16sqft): See Page 5 for Tile Pack Sizes
FINISH OPTIONS	AcustiColor Coating
EDGE STYLE	Straight
APPLICATION	Indoor Wall
INSTALLATION	Audimute Strata® Tape, Loctite® Power Grab® Express Heavy Duty, Paslode® Brad Nailer & Compatible Foot
HANDLING / CARE	When handling tiles, make sure hands are clean and oil free. Vacuuming or light brushing is recommended to prevent dust and soil buildup.
STORAGE	Acoustic Tiles must be stored in a dry place. Delivery Packaging is not ideal for storage purposes. It is advised to place a polyethylene cover over the stack when packaging is removed, to reduce moisture absorption. It is recommended that panels be stored horizontally. It is recommended that panels should not be stacked. It is strongly recommended to avoid storage longer than 6 months. Do not allow water to come into direct contact with the material during storage. Store in a cool dry space 55°F - 85°F.
FIRE RATING	ASTM E84 Class A
COLOR FASTNESS TO LIGHT	Grade 4 min. at 40 hours
COLOR FASTNESS TO CROCK	Grade 4 min. dry & Grade 3 min. wet
ACOUSTIC RATING	NRC: 0 .75

ACOUSTICOLOR PLANKS: SPECIFICATIONS

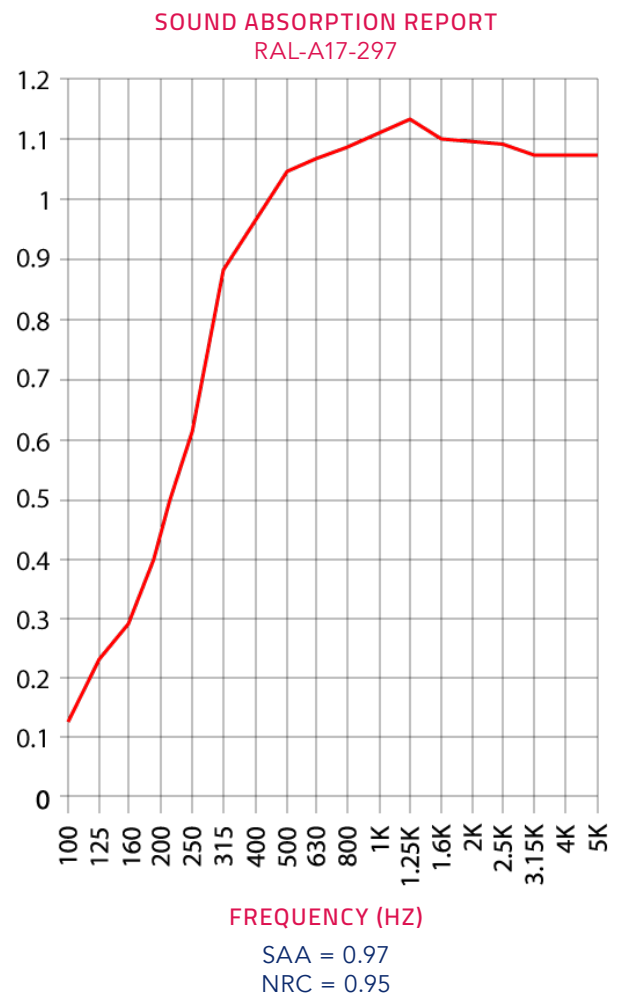
CONTENT	Acoustic substrate: P.E.T. 10% - 30%, Recycled Cotton 70% - 90%
COMPONENTS	Acoustic Substrate, Coating
THICKNESS	1"
THICKNESS TOLERANCE	+1/8"
SIZES	4'x4' (16sqft) - 14 Planks (6" height, 1"thick) - (2) 6"x48", (4) 6"x36", (4) 6"x24", (4) 6"x12"
FINISH OPTIONS	AcoustiColor Coating
EDGE STYLE	Straight
APPLICATION	Indoor Wall
INSTALLATION	Audimute Strata® Tape, Loctite® Power Grab® Express Heavy Duty, Paslode® Brad Nailer & Compatible Foot
HANDLING / CARE	When handling planks, make sure hands are clean and oil free. Vacuuming or light brushing is recommended to prevent dust and soil buildup.
STORAGE	Acoustic Planks must be stored in a dry place. Delivery Packaging is not ideal for storage purposes. It is advised to place a polyethylene cover over the stack when packaging is removed, to reduce moisture absorption. It is recommended that panels be stored horizontally. It is recommended that panels should not be stacked. It is strongly recommended to avoid storage longer than 6 months. Do not allow water to come into direct contact with the material during storage. Store in a cool dry space 55°F - 85°F.
FIRE RATING	ASTM E84 Class A
COLOR FASTNESS TO LIGHT	Grade 4 min. at 40 hours
COLOR FASTNESS TO CROCK	Grade 4 min. dry & Grade 3 min. wet
ACOUSTIC RATING	NRC: 0 .75

1.5" ACOUSTIC PANELS: ACOUSTIC TESTING

Acoustic Panels Test Report

The test report quotes the frequency dependent sound absorption data as well as the single number ratings. Data taken from Test Report RAL-A17-297 conducted by Riverbank Acoustical Laboratories. Complete test results are available upon request.

FREQUENCY (HZ)	ABSORPTION COEFFICIENT
100	0.13
125	0.23
160	0.29
200	0.43
250	0.62
315	0.87
400	0.96
500	1.04
630	1.07
800	1.09
1000	1.11
1250	1.14
1600	1.10
2000	1.10
2500	1.09
3150	1.06
4000	1.07
5000	1.06

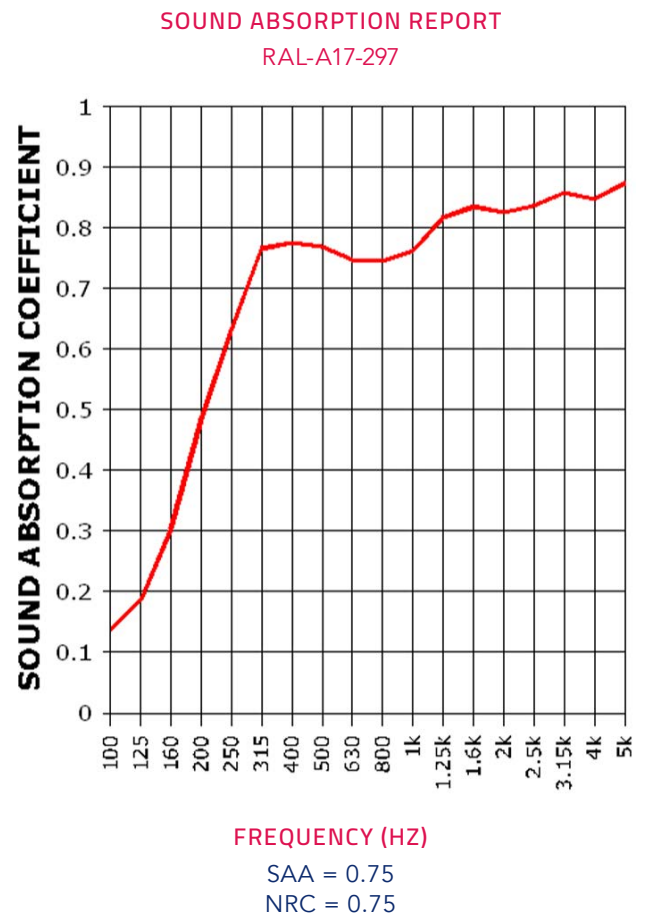


1" ACOUSTIC TESTING:

Test Report

The test report quotes the frequency dependent sound absorption data as well as the single number ratings. Data taken from Test Report RAL-A17-297 conducted by Riverbank Acoustical Laboratories. Complete test results are available upon request.

FREQUENCY (HZ)	ABSORPTION COEFFICIENT
100	0.14
125	0.19
160	0.31
200	0.49
250	0.63
315	0.77
400	0.78
500	0.77
630	0.75
800	0.75
1000	0.76
1250	0.82
1600	0.84
2000	0.83
2500	0.84
3150	0.86
4000	0.85
5000	0.87



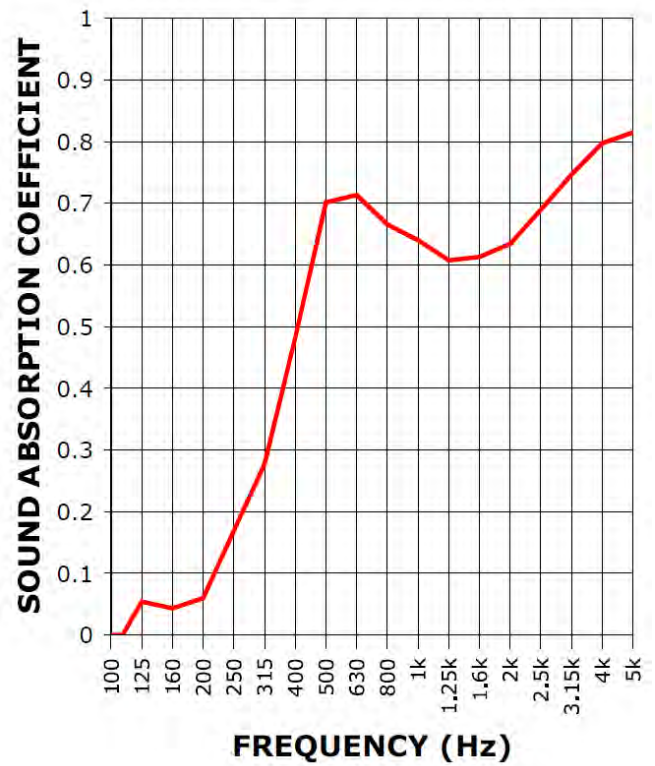
0.5" ACOUSTIC TESTING:

Test Report

The test report quotes the frequency dependent sound absorption data as well as the single number ratings. Data taken from Test Report RAL-A14-263 conducted by Riverbank Acoustical Laboratories. Complete test results are available upon request.

FREQUENCY (HZ)	ABSORPTION COEFFICIENT
100	-0.03
125	0.05
160	0.04
200	0.06
250	0.17
315	0.28
400	0.48
500	0.70
630	0.71
800	0.67
1000	0.64
1250	0.61
1600	0.61
2000	0.63
2500	0.69
3150	0.75
4000	0.80
5000	0.81

SOUND ABSORPTION REPORT
RAL-A14-263



FREQUENCY (HZ)

SAA = 0.52

NRC = 0.55

Hang Tabs Installation Instructions:

ACOUSTIC PANELS (Fabric, Image, & AcoustiColor®) ACOUSTICOLOR SHAPES

Hang tabs are made of durable plastic with an adhesive backing that adheres to the back of the panels, and is secured with two screws. The tabs are then used to mount panels to a wall using our Easy, Standard, or Stacked installation methods. Typically, two hang tabs are used per panel, however, larger panels may require more.

Items needed: Hang tabs with included screws, a level, a pencil, and a Phillips head screwdriver.



Please note: For the Standard & Stacked Hang Tabs installation methods, you will also need a measuring tape.

Step 1: Position a panel on the wall. Use a level on the top of the panel.



Step 2: Remove the level and lightly draw a line across the top of the panel with a pencil.



Easy Method:

Step 3: Screw the Walldog fasteners into the wall, just below the line. Make sure to leave a small 1/8" gap for the hang tab.



Step 4: Peel the wax backer off the hang tab, then place the tab over the screw on the wall with the sticky side facing out.



Easy Method Continued:

Step 5: Position the panel firmly into place on the wall and apply pressure to the locations of the hang tabs, so the hang tabs stick to the back of the panel.



Step 6: Remove the panel by lifting up and out from the keyholes on the tabs.

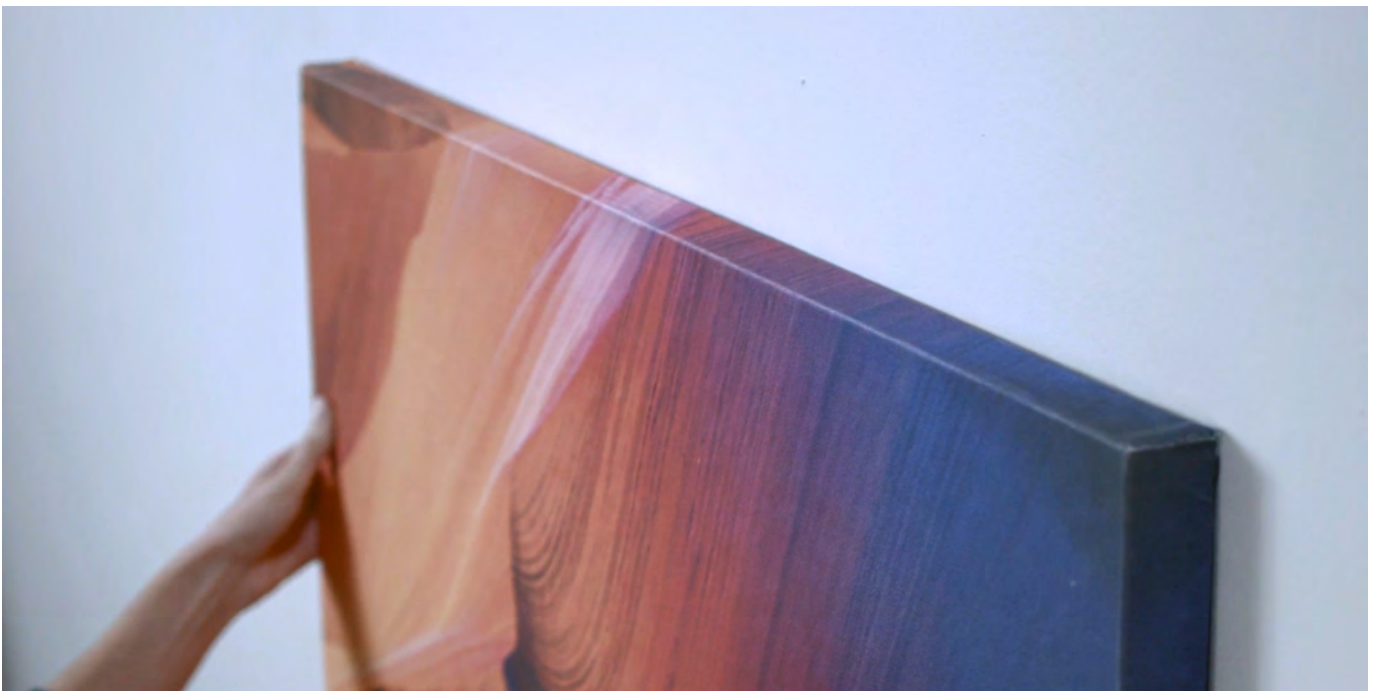


Easy Method Continued:

Step 7: Secure the hang tabs on the back of the panel with the small screws provided.



Step 8: Hang the panel on the wall, like you would a wall clock, sliding the keyholes over the screws and it will be positioned precisely where you want it.



Standard Method (measuring tape required):

Step 3 (see page 2 for steps 1 & 2): Peel the wax backer off the hang tabs, then place the hang tabs sticky side down on the back of the panel, and secure the tabs with the small screws provided.



Step 4: Measure the distance between the keyholes on the hang tabs and from the top of the keyholes to the top of the panel.



Standard Method Continued:

Step 5: Apply the same measurements taken in Step 4 to the wall, using the line created in Step 2 as a reference to the top of the panel. Mark the locations of where the keyholes will be on the wall with a pencil.

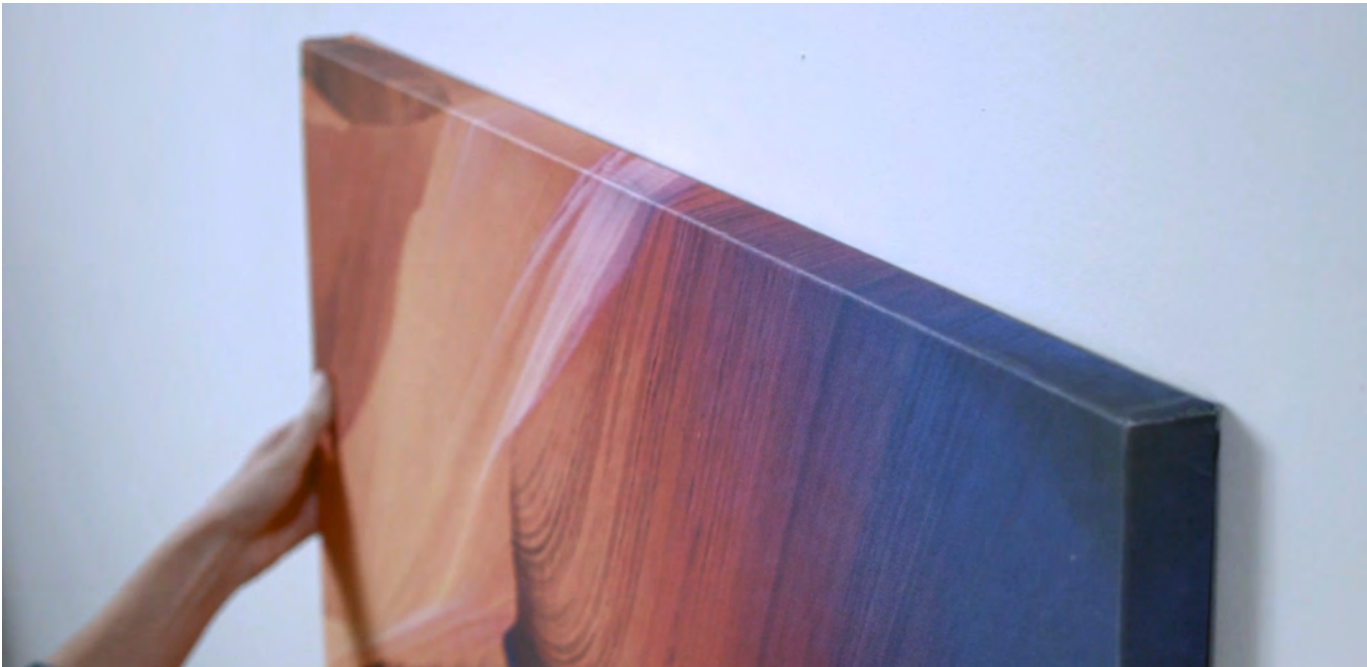


Step 6: Screw the Walldog fasteners into the wall, just below the line. Make sure to leave a small 1/8" gap for the hang tabs.



Standard Method Continued:

Step 7: Hang the panel on the wall, like you would a wall clock, sliding the keyholes over the screws.

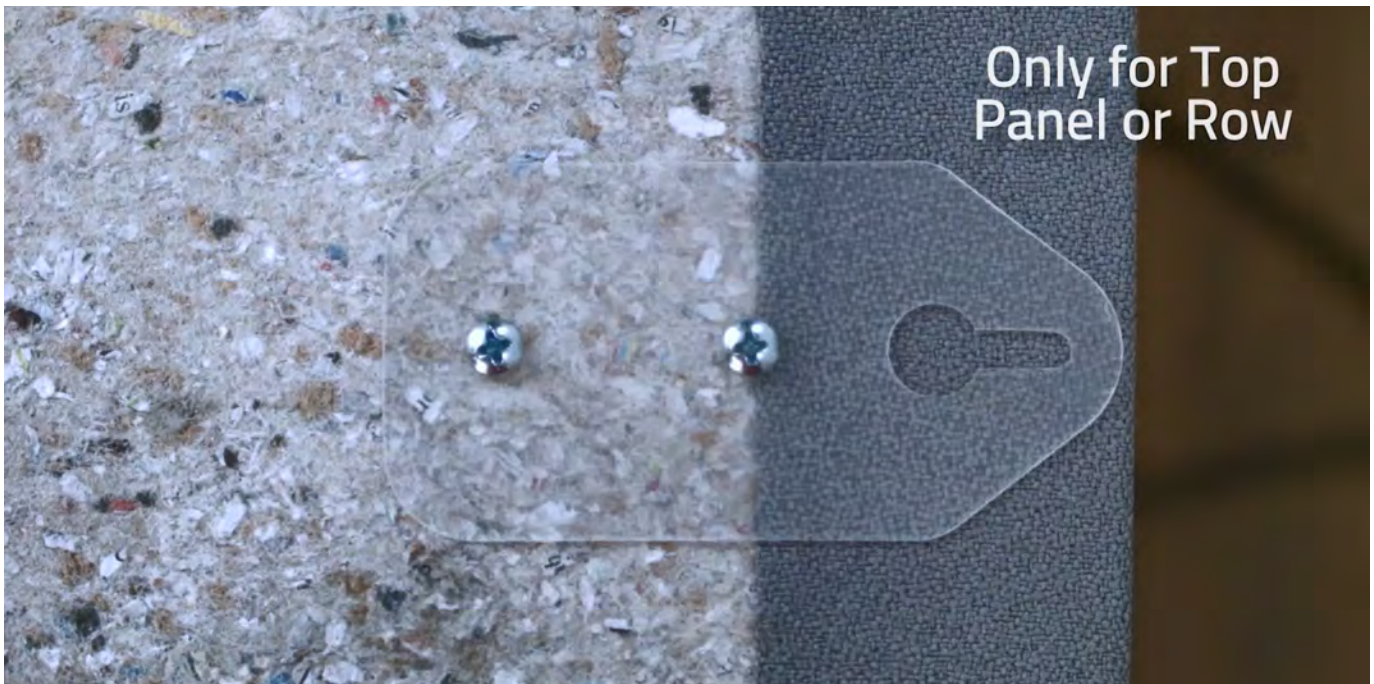


Stacked Method (measuring tape required):

Step 3 (see page 2 for steps 1 & 2): Use Steps 1 & 2 for the first row only. For all panels except for the one(s) for the top row, peel the wax backer off the hang tabs, then place the hang tabs sticky side down on the back of the panel just above the top edge, and secure the tabs with the small screws provided.



For the panel(s) that will be used for the top row, install the hang tabs just below the top edge. Install the hang tabs with equal distances from the top edge of the panel(s).



Stacked Method Continued:

Step 4: Place the first panel for the bottom row on the wall, using the level line drawn in Step 2 as a reference to the top of the panel. Screw the Walldog fasteners into the wall through the top of the keyholes in the hang tabs.



Step 5 (optional): For additional panels before the top row, rest the panels on top of the lower row and repeat the instruction in the last sentence of Step 4.



Stacked Method Continued:

Step 6: For the panel(s) for the top row, measure the distance between the keyholes on the hang tabs and the distance from the bottom of the panel(s) to nearly the top of the keyholes on the tabs. Then, apply the same measurements to the wall and mark the locations of where the keyholes will be on the wall with a pencil.



Step 7: For the top panel(s), screw the Walldog fasteners into the wall and make sure to leave a small 1/8" gap for the hang tabs.



Stacked Method Continued:

Step 8: Hang the top row panel(s) on the wall, like you would a wall clock, sliding the keyholes over the screws.



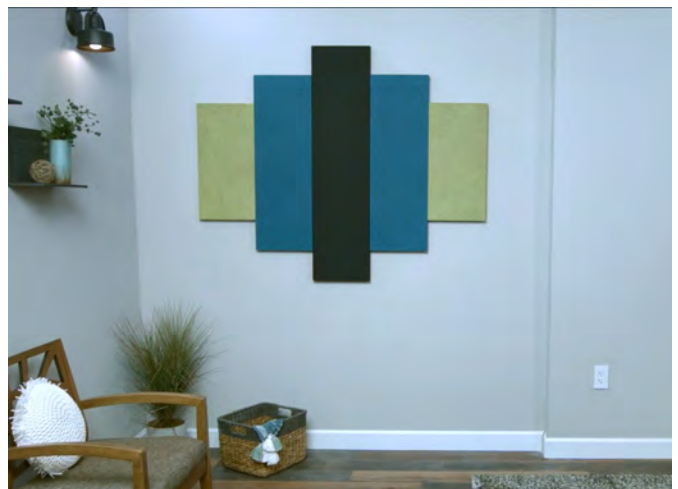
Loctite® Power Grab® Express Heavy Duty Installation Instructions:

ACOUSTIC PANELS (Fabric, Image, & AcoustiColor®)
ACOUSTICOLOR SHAPES
AUDIMUTE STRATA®
ACOUSTIWOOD®, ACOUSTISTONE®, ACOUSTIFELT™

Step 1: Apply 2" diameter dabs of adhesive on a panel, no more than 2' apart.



Step 2: Press firmly into place and you're done!



Paslode® Brad Nailer Installation Instructions:

ACOUSTIWOOD® ACOUSTIC WOOD ALTERNATIVE PLANKS
ACOUSTISTONE® ACOUSTIC STONE ALTERNATIVE TILES
ACOUSTICOLOR® ACOUSTIC PANELS & SHAPES
ACOUSTIFELT™ TILES, PLANKS, & SHAPES

Step 1: Attach the compatible foot to the brad nailer, then fasten panels in place with the brad nailer. Always use eye protection and follow Paslode's instructions for use.



Optional Step: When installing AcoustiWood Planks or AcoustiStone Tiles, a retractable utility knife and a T-square can be used to cut the planks as needed for an exact fit.



If you want to remove or move the panels, simply pull them off the wall and use pliers to pull out any nails that are left in the wall.





Mitch Zlotnik
Founder & President of Audimute

Our founder Mitch Zlotnik loved his drums and respected his neighbors. So he invented a versatile sound absorption solution a musician could afford and a neighbor would love. Today our invention, eco-C-tex® is the key ingredient in a versatile suite of sound absorption and sound proofing solutions. Proudly made from 100% recycled materials, Audimute products are revolutionizing the way people experience work, worship, entertainment, and their home.

1.866.505.MUTE
sales@audimute.com
9 am – 5 pm, Monday – Friday EST.